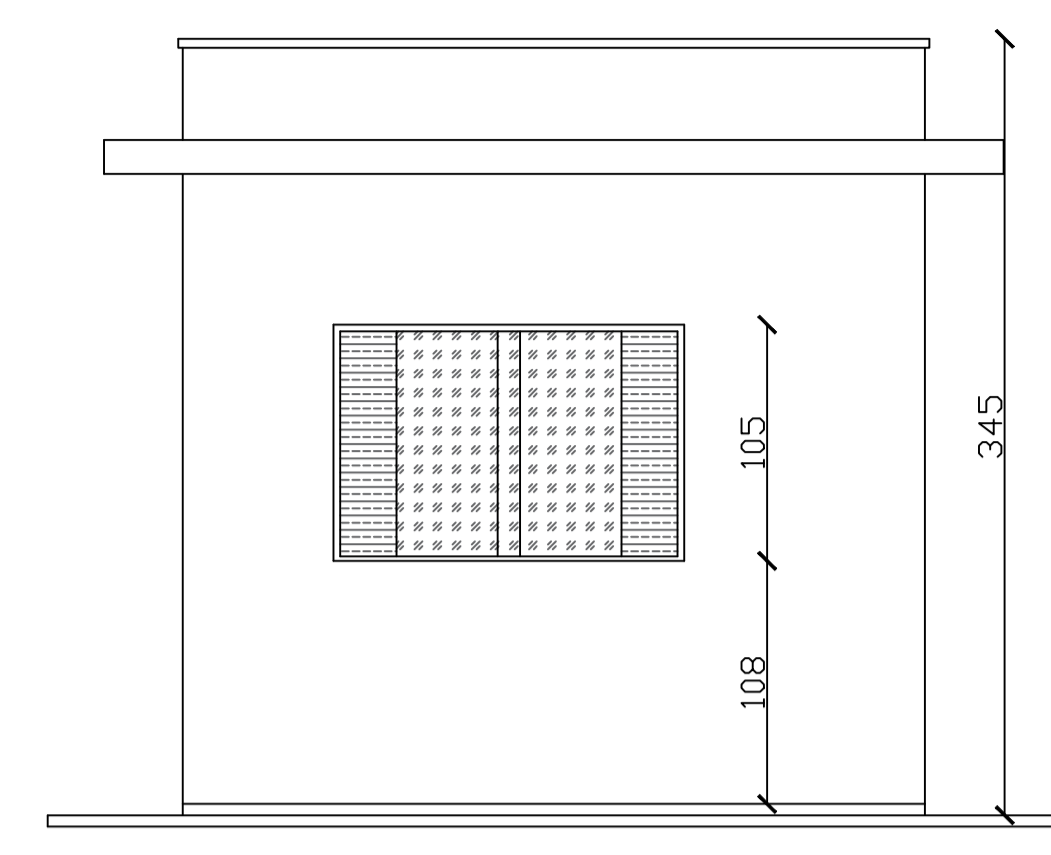
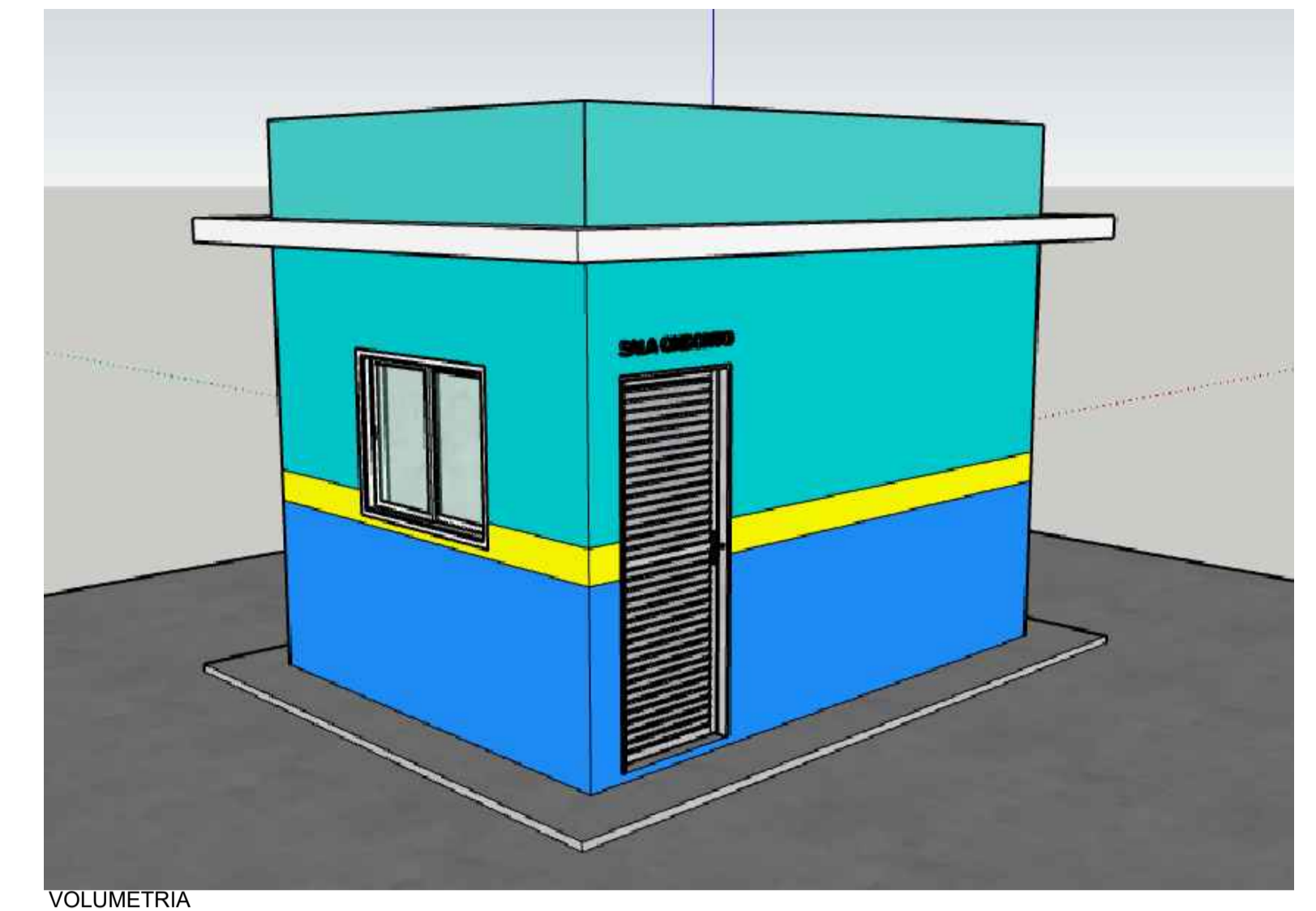


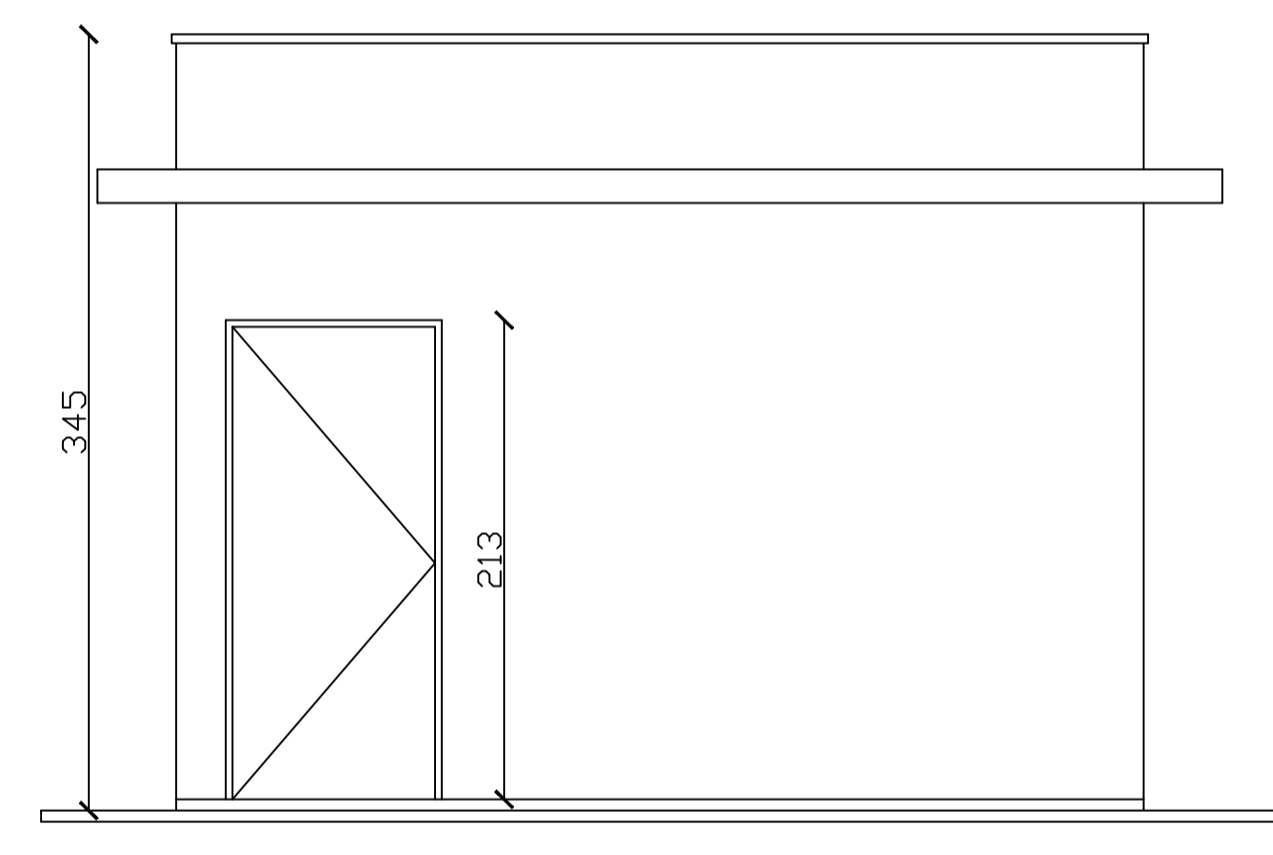
1 PLANTA BAIXA
ESCALA 1 : 75



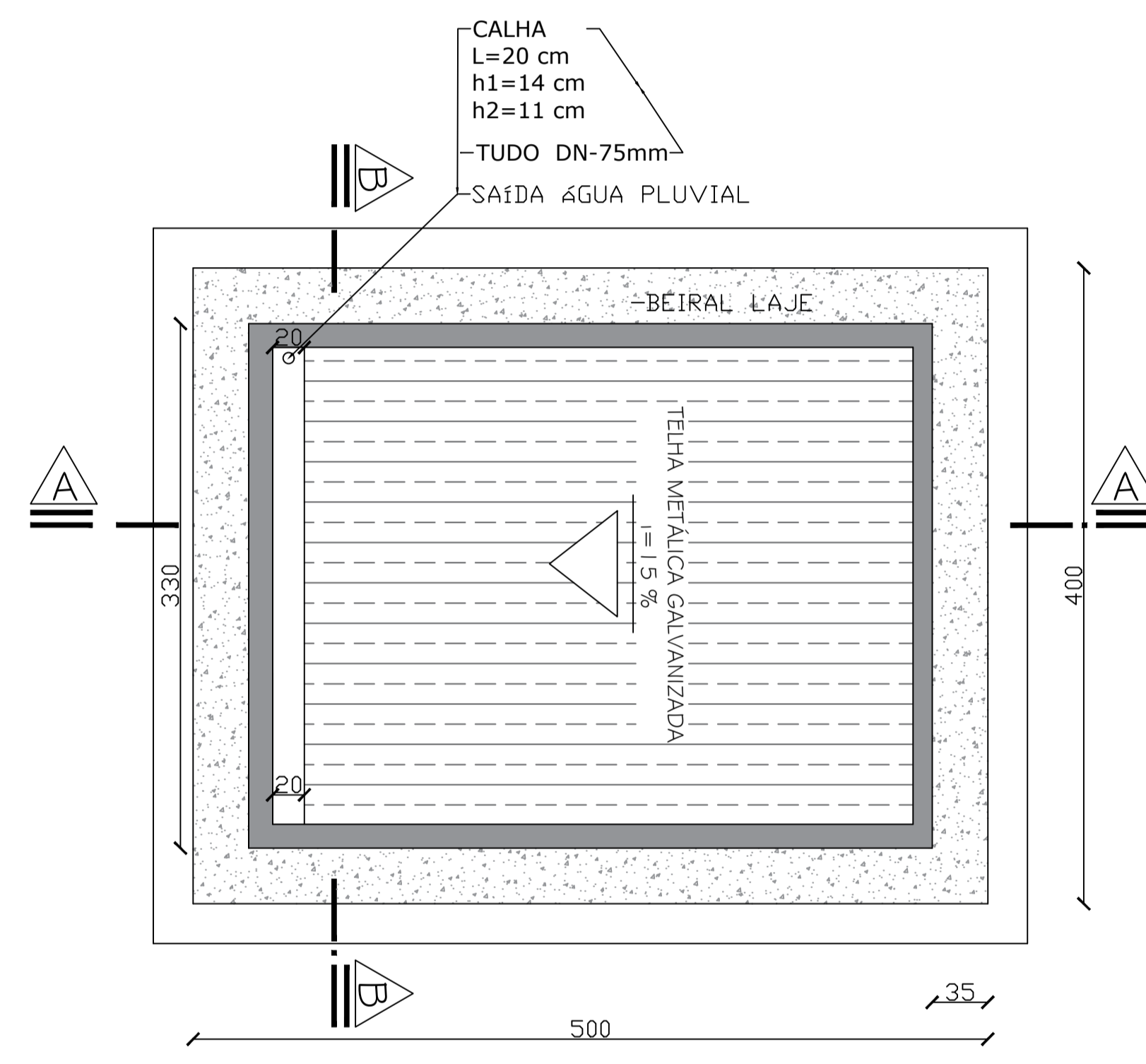
1 FACHADA LATERAL
ESCALA 1 : 75



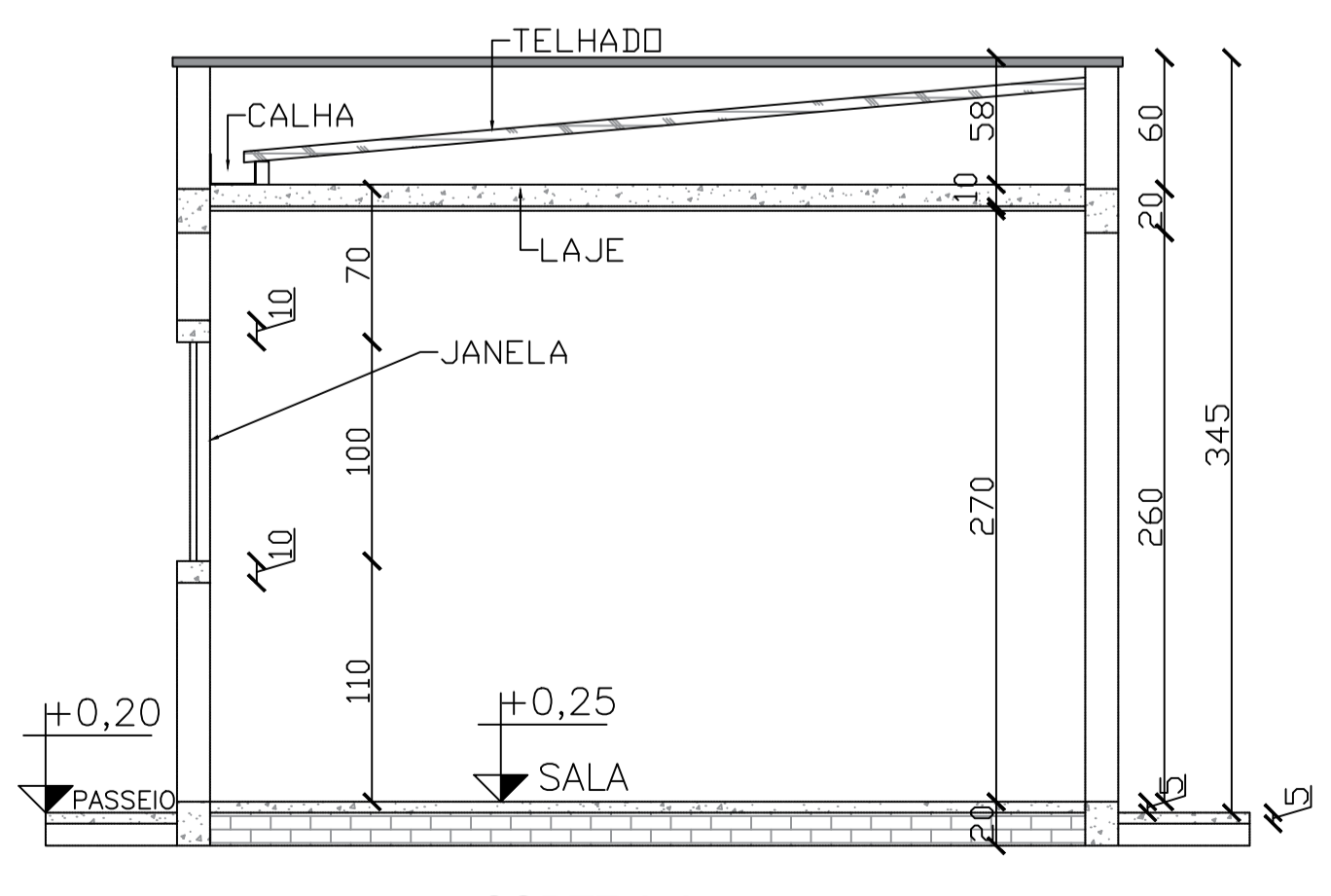
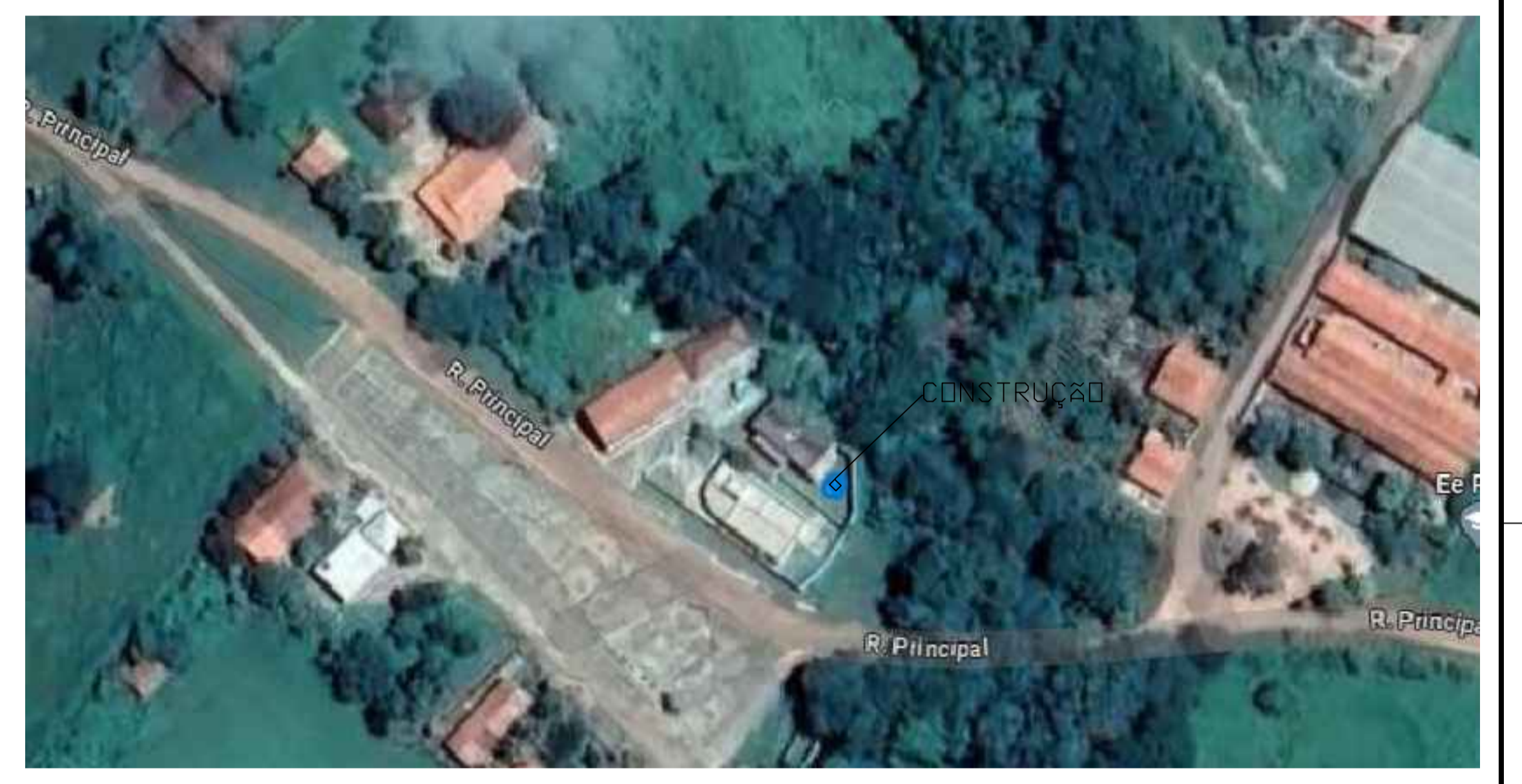
VOLUMETRIA



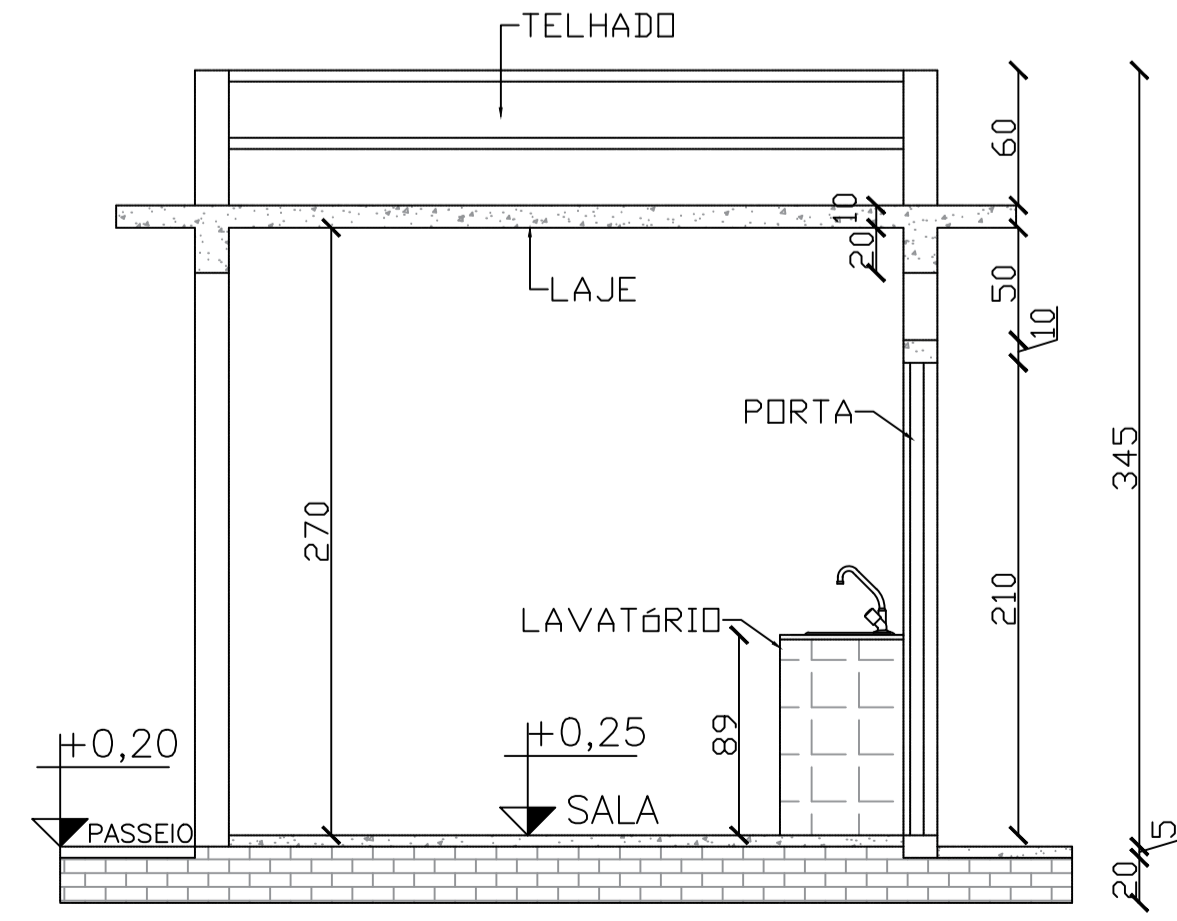
1 FACHADA FRONTAL
ESCALA 1 : 75



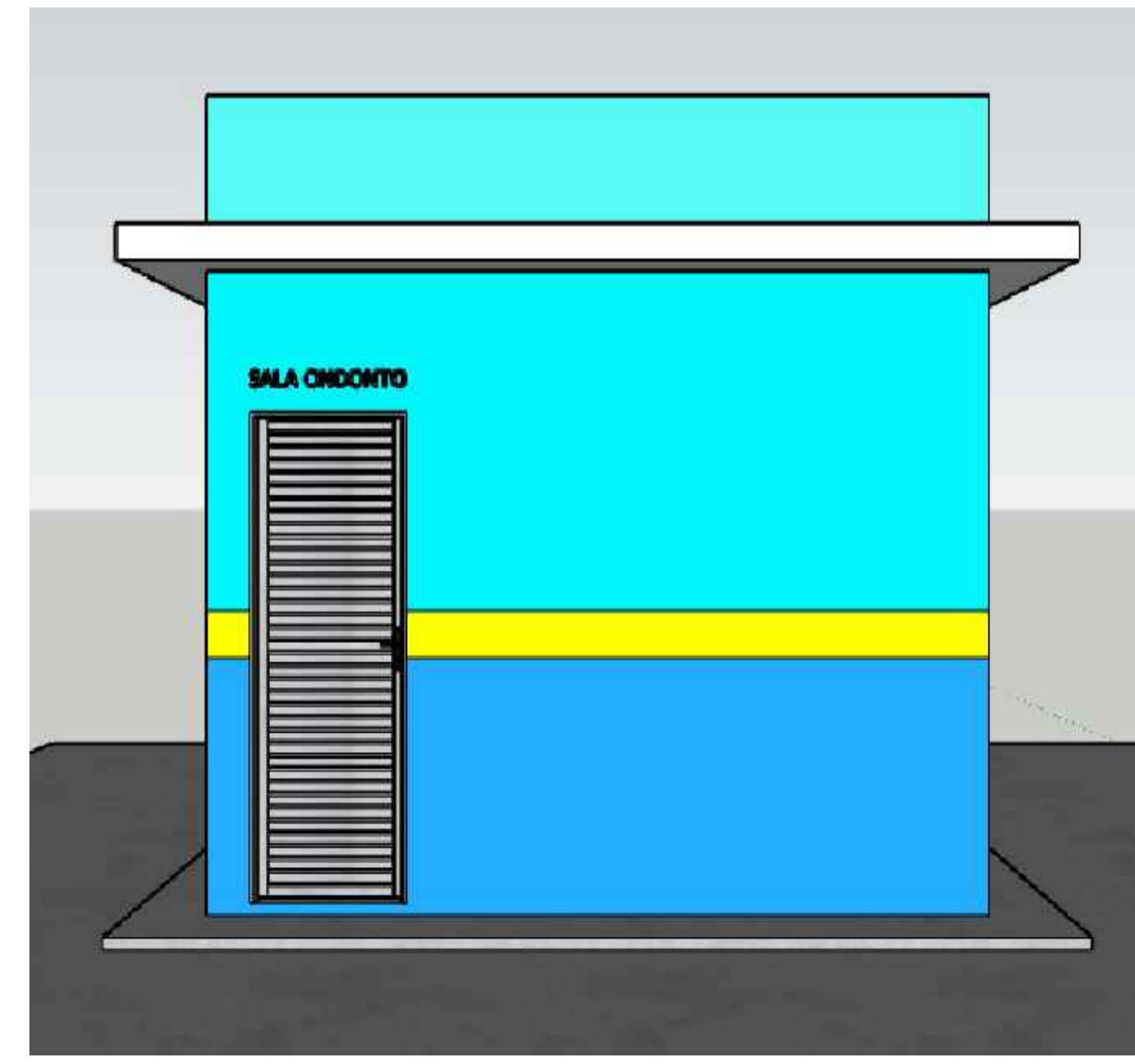
1 PLANTA COBERTURA
ESCALA 1 : 75



1 CORTE A-A
ESCALA 1 : 75



1 CORTE B-B
ESCALA 1 : 75



PREFEITURA MUNICIPAL DE PINTÓPOLIS-MG			
RESPONSÁVEL TÉCNICO	CREA		
 Rewison Alves Da Cruz Engenheiro Civil CREA-MG 220818/D RVI 09699-3455	MG 220818/D		
PROPRIETÁRIO	CNPJ		
 Prefeitura Municipal de Pintópolis-MG Ley Lopes Dos Santos Prefeito Municipal	01.612.481/0001-59		
TÍTULO	PROJETO DE CONSTRUÇÃO DE SALA DE ODONTOLOGIA PSF ACARI		
CONTEÚDO	Assunto	PLANTAS BAIXAS	
Endereço:	COMUNIDADE VILA ACARI MUNICÍPIO DE PINTÓPOLIS-MG, CEP 38317-000	Data	26 DE OUTUBRO DE 2023
Área:	ÁREA CONSTRUÍDA TOTAL= 14,19 m²	Folha	A1
		Prato	01/01