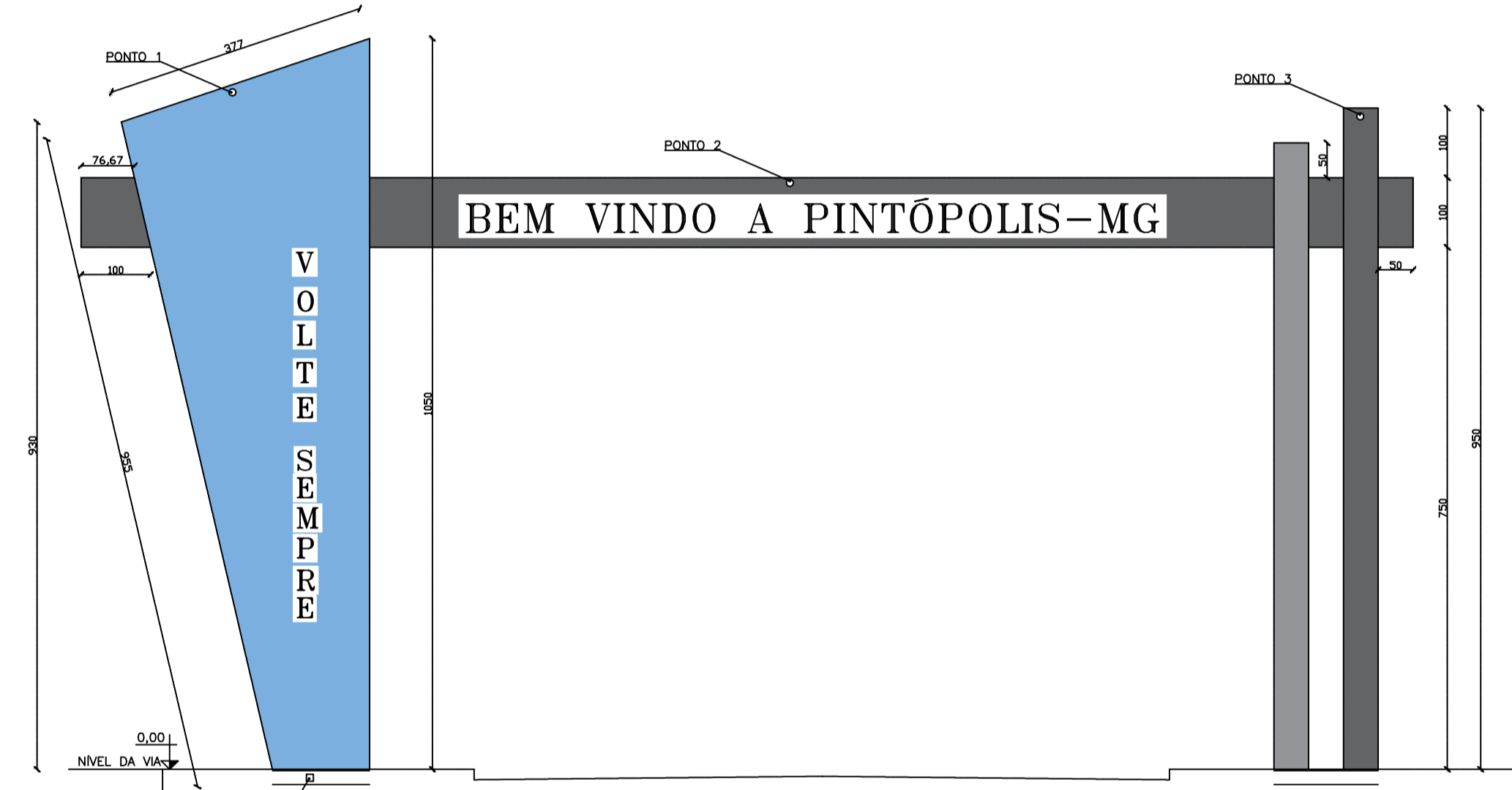
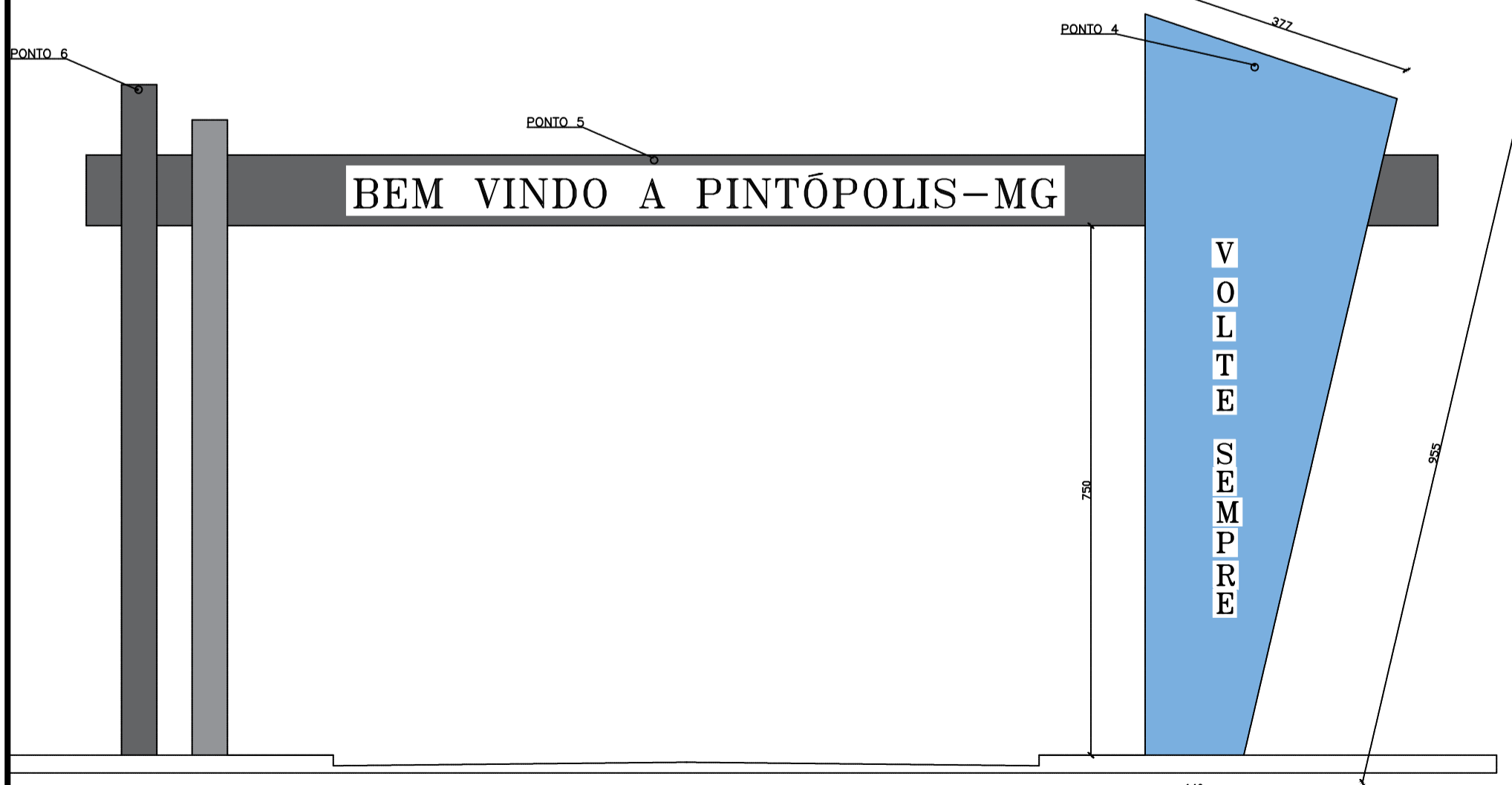


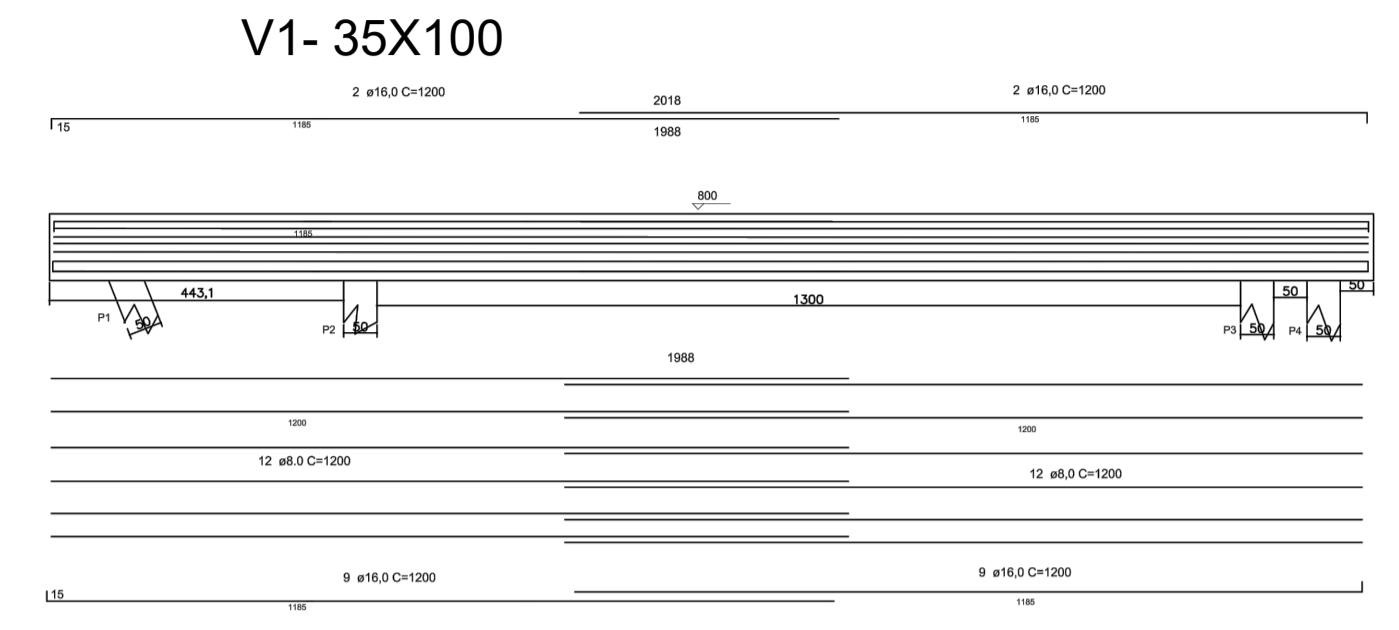
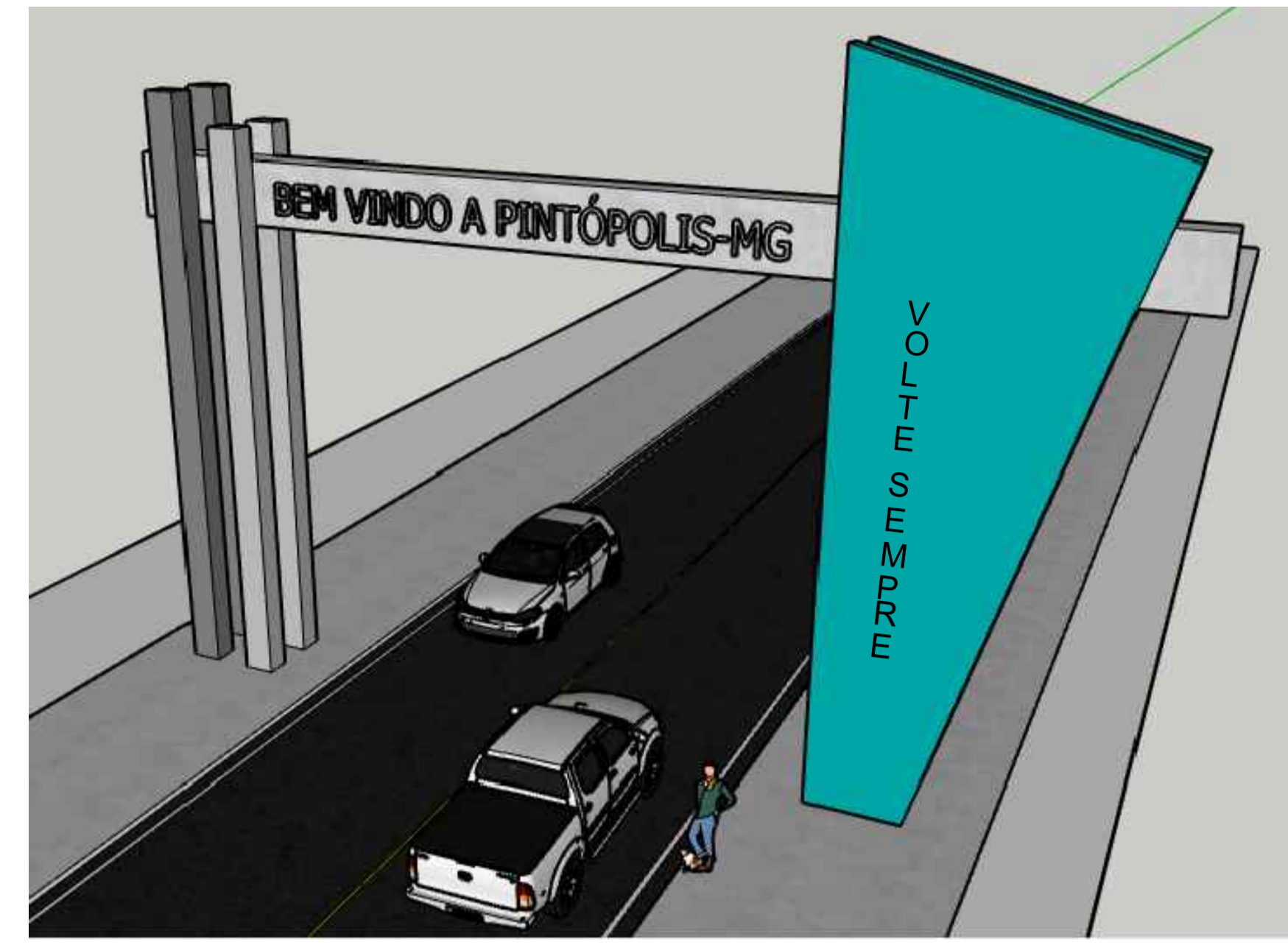
1 PLANTA BAIXA/LOCAÇÃO  
ESCALA 1 : 75



1 CORTE A-A  
ESCALA 1 : 75



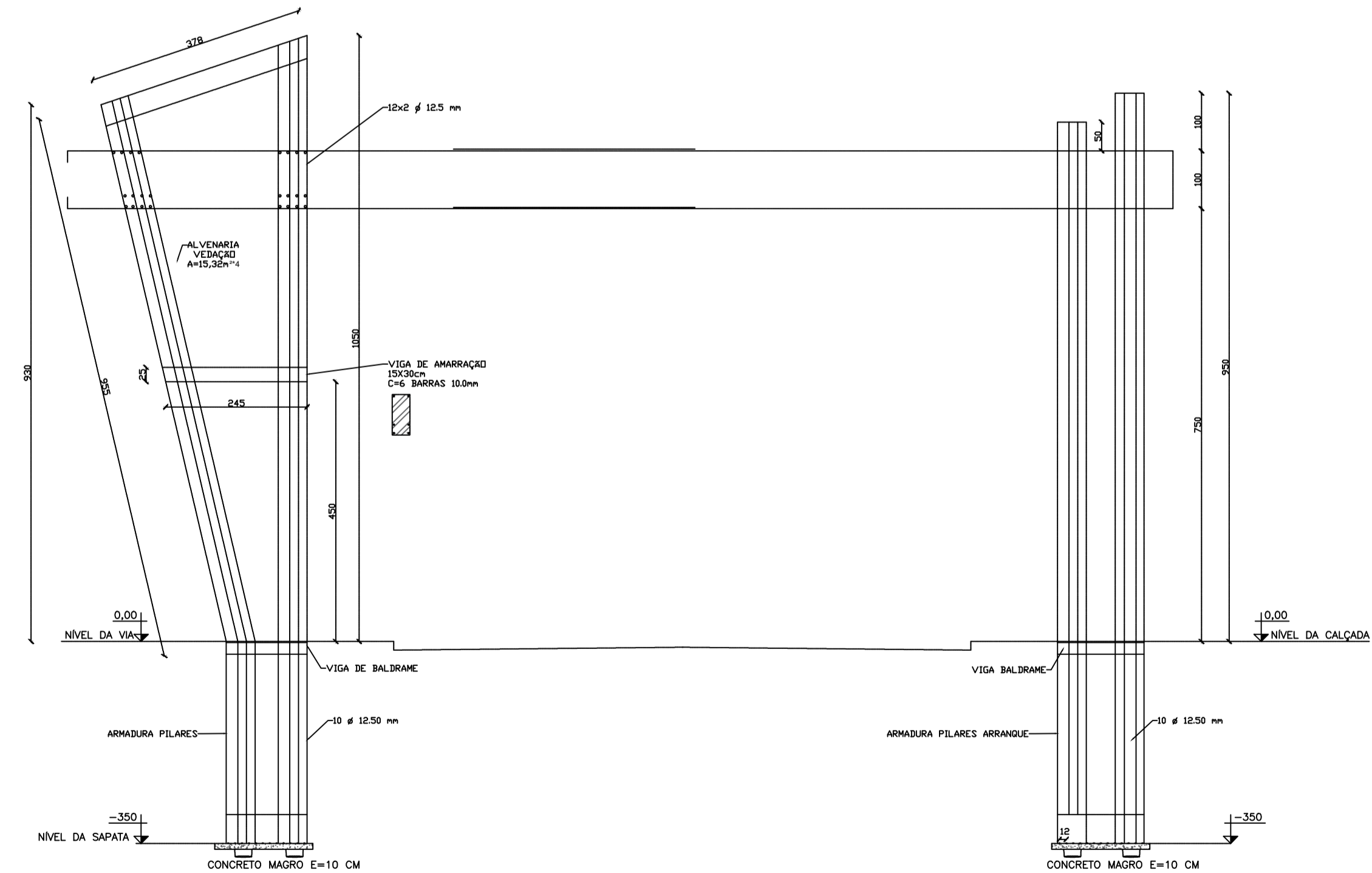
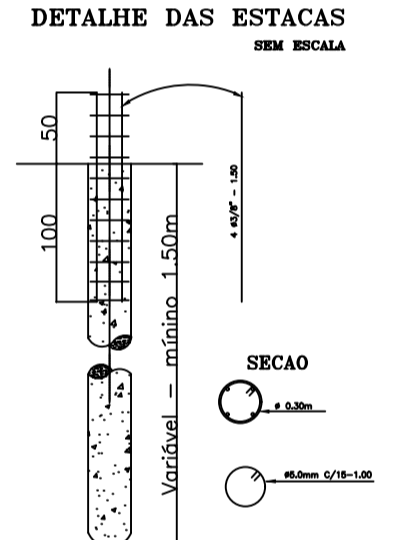
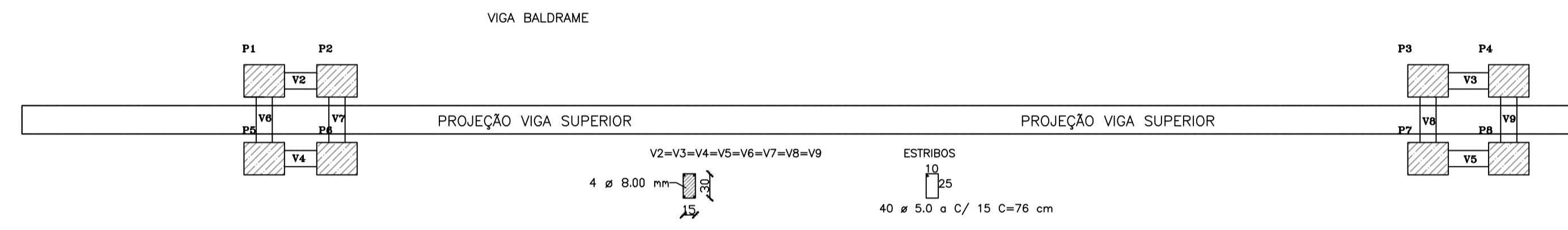
1 FACHADA  
ESCALA 1 : 75



SEÇÃO A-A  
ESC 1:50

RESUMO AÇO CA 50-60			
AÇO	BIT (mm)	COMPR (m)	PESO (kg)
50	16,0	316,28	430,84
50	12,5	1286,4	1230,8
50	10,0	60,5	37,33
50	8,0	579,3	247,67
50	6,3	993,6	243,43
Peso Total 50 (+10%)=			2206,18 kg
Peso Total 60 (+35%)=			66,20 kg
VOLUME DO CONCRETO 25 MPa=			42,85 m³
ÁREA DE FORMA=			85,00 m²

QTD	N	DIAMETRO (mm)	COMPRIMENTO (mm)	PESO (kg)
12	8	10	1980	1230,8
2	16	1200	2400	430,84
12	8	10	1980	1230,8
2	16	1200	2400	430,84
12	8	10	1980	1230,8
2	16	1200	2400	430,84
12	8	10	1980	1230,8
2	16	1200	2400	430,84
12	8	10	1980	1230,8
2	16	1200	2400	430,84
12	8	10	1980	1230,8
2	16	1200	2400	430,84



1 ARMADURAS PILARES E FUNDAÇÃO  
ESCALA 1 : 75

**PREFEITURA MUNICIPAL DE PINTÓPOLIS-MG**

**REVISION ALVES DA CRUZ**  
Engenheiro Civil  
CREMOP 220818/D

**LEY LOPES DOS SANTOS**  
Prefeito Municipal

PROJETO DO PORTAL DA CIDADE PINTÓPOLIS-MG

PLANTAS FACHADA IMAGEM 3D

MAIO DE 2024

ÁREA CONSTRUÍDA TOTAL= 13,66m²

Folha A1

Prato 01/01